

At1g34670
 At5g10280
 At5g65230
 Scaffold5445_1
 Scaffold7137_2
 Scaffold9773_1

G01: m

At3g02940
 At4g17780
 At5g16770
 Scaffold11444_1
 Scaffold4085_1

G02: -I1

At3g01140
 At5g15310
 Scaffold2816_1
 Scaffold474_1
 Scaffold951_5
 Scaffold1247_2

G03: m

At4g28110
 At4g21440
 At4g05100
 At5g54230
 Scaffold9777_1

G04: m

At1g22640
 At2g16720
 At4g09460
 At4g38620
 At4g34990
 At928969-Y49
 Scaffold15586_1
 Scaffold321_3
 Scaffold87_1
 Scaffold987_1
 Scaffold987_3

G05: m, -I1

At1g66230
 At4g12350
 At4g22680
 At5g16600
 Scaffold13580_1
 Scaffold1873_3
 Scaffold3089_4
 Scaffold3266_2
 Scaffold6283_1
 Scaffold755_5

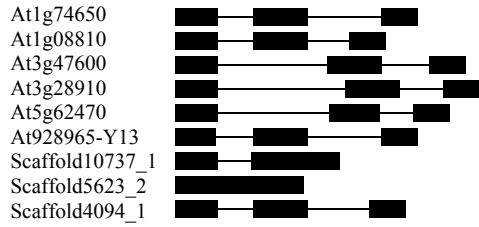
G06: m, -I1

At3g27920
 At5g14750
 At5g40330
 At166780-GL1
 At6601337-WER
 At3g28470

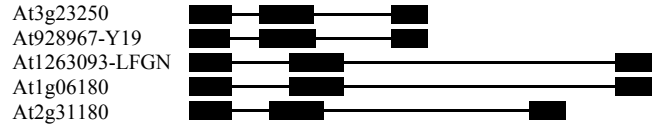
G07: m

At5g56110
 At5163509-Myb103
 Scaffold558_5
 Scaffold9672_1

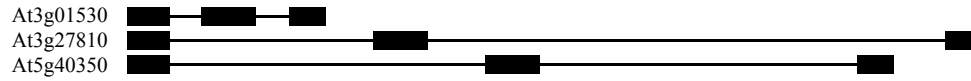
G08: m



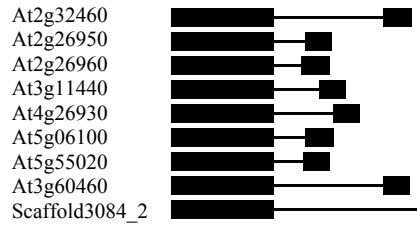
G09: m, -I2, 0



G10: m



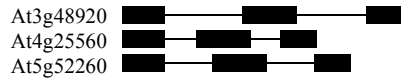
G11: m



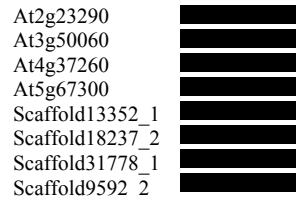
G12: n



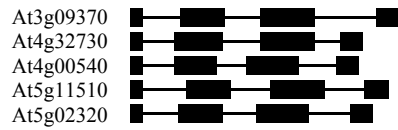
G13: m



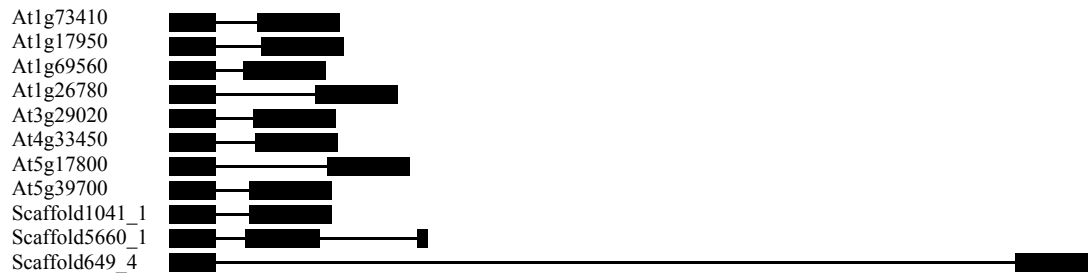
G14: m



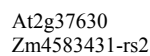
G15: 0



G16: n



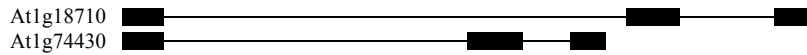
G17: -I2, n



G18: 0



G19: n, 0



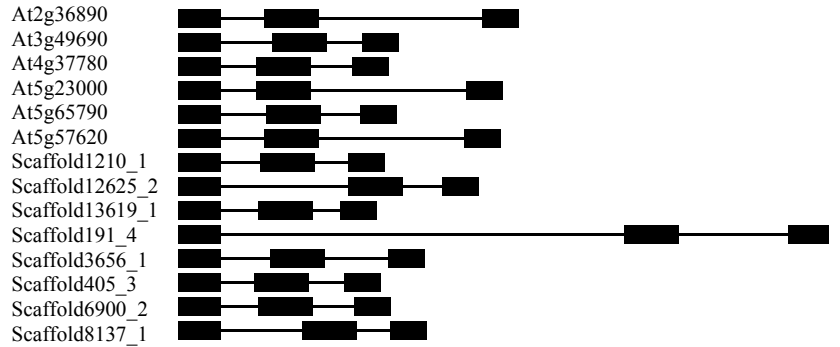
N01: m



N02: m



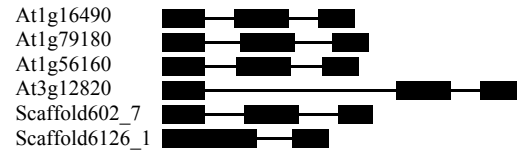
N03: m



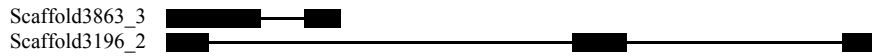
N04: m



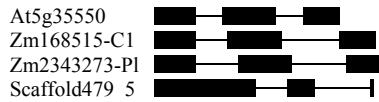
N05: m, -I2



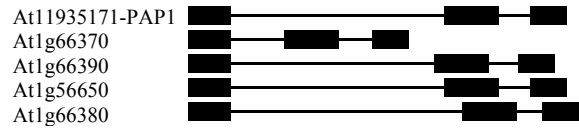
N06: m, -I1



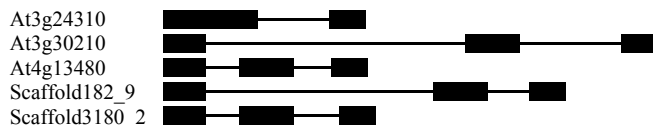
N07: m, -I1



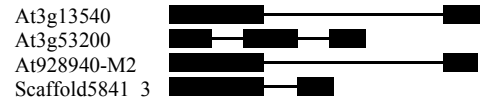
N08: m, n



N09: m



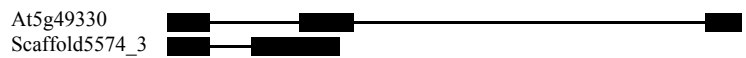
N10: m, -I1



N11: m, -I1



N12: m, -I2



N13: m, -I2

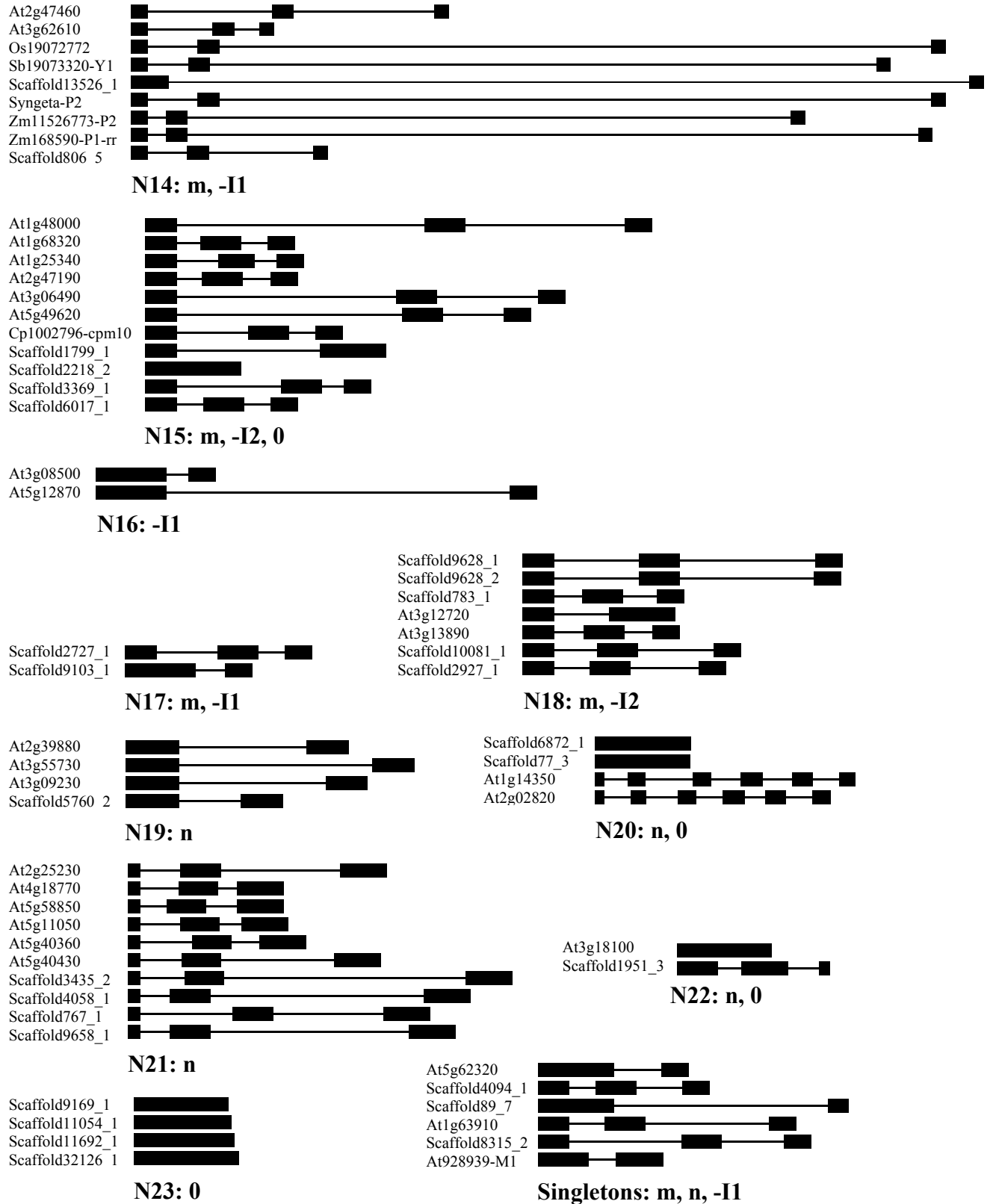


Figure The conserved exon-intron structure in R2R3 domains of all member genes within each subgroup. Boxes and lines indicate exons and introns, respectively. m indicates the major splicing pattern typified by G13; -I1 and -I2 stand for the typical splicing pattern with lack intron 1 and intron 2, respectively; n indicates non-major splicing patterns; and 0 indicates no introns in the Myb R2R3 domains.